

# Nextone.



**LEA**

CERAMICHE

# P R ( ) T E C T<sup>®</sup>

ANTIBATTERICO - ANTIMICROBIAL

Questa collezione è realizzata  
con l'esclusiva tecnologia antibatterica Protect<sup>®</sup>.

This collection is made with the exclusive  
antimicrobial Protect<sup>®</sup> technology.

with MICROBAN<sup>®</sup>



Questa è una collezione che comprende materiali ultrasottili e sostenibili,  
con impatti ambientali ridotti ed emissioni di CO<sub>2</sub>  
totalmente compensate dalla partecipazione a progetti internazionali  
di abbattimento della CO<sub>2</sub> nelle città più inquinate.

This is a collection that includes ultra-thin and sustainable materials,  
with reduced environmental impact and CO<sub>2</sub> emissions  
totally compensated by the participation in international projects  
of CO<sub>2</sub> reduction in the most polluted cities.

CO<sub>2</sub> Neutral

# Nextone.

<b>01.</b>	<b>Introduction</b>	<b>04</b>
<b>02.</b>	<b>Colors</b>	<b>08</b>
02a.	Variations	10
02b.	Decors	14
02c.	Mosaics	16
<b>03.</b>	<b>The Collection</b>	<b>18</b>
03a.	Next Gray	20
03b.	Next Taupe	32
03c.	Next Dark	42
03d.	Next White	54
03e.	Outdoor	62
<b>04.</b>	<b>Info</b>	<b>68</b>
	Slimtech	70
	Think Zero	72
	Protect	74
	Color range	76
	Sizes	86
	Item codes	90
	Technical characteristics	94
	Packing	96
	Certifications	97
	Intended uses - key	98
	Overview	100

LEA  
CERAMICHE



01.

Il segno essenziale.  
Materia ceramica che  
abita lo spazio.

The essential signature.  
Ceramic matter  
that lives in space.



# Introduction.

Un effetto pietra appositamente ingegnerizzato: è quello che Lea Ceramiche propone con Nextone. Pietre provenienti da quattro diverse cave, combinate in modo inedito, ne creano una nuova, non esistente in natura, dall'estetica naturale ed equilibrata.

I quattro colori della collezione esprimono tonalità neutre, che spaziano dal candido White al luminoso Gray, dall'accogliente Taupe all'elegante Dark, un antracite con una punta di marrone.

Nextone è una collezione articolata in tre tecnologie produttive e in altrettanti spessori: un sistema decorativo pieno di risorse, con una gamma di formati, colori e decori in grado di misurarsi con ogni tipologia di progetto architettonico.

With Nextone, Lea Ceramiche offers a specially engineered stone effect. Various types of stone from four different quarries, combined in an original way, create a new stone that does not exist in nature and that boasts a natural and balanced aesthetic.

The collection's four colours express neutral tones, ranging from pure White to bright Gray and from welcoming Taupe to elegant Dark, a charcoal grey with a hint of brown.

Nextone is a collection divided into three manufacturing technologies and as many thicknesses: a resourceful decorative system with a range of formats, colours and decorations that can compete with any type of architectural design.



# 02.



## Colori Slimtech / Slimtech Colors

- 01. Next Gray
- 02. Next White
- 03. Next Taupe
- 04. Next Dark

Materiale / Material  
Gres porcellanato laminato /  
Laminated porcelain stoneware  
6mm

Finiture / Finishes  
nat

Formati / Sizes  
120x120cm 48"x48"  
120x260cm 48"x102"



## Colori Gres / Stoneware Colors

- 01. Next Gray
- 02. Next White
- 03. Next Taupe
- 04. Next Dark

Materiali / Materials  
Gres porcellanato /  
Porcelain stoneware  
9mm

Finiture / Finishes  
nat  
lapp  
grip

Formati / Sizes  
120x120cm 48"x48"  
90x90cm 36"x36"  
60x120cm 24"x48"  
60x60cm 24"x24"  
30x60cm 12"x24"

Formati speciali /  
Special sizes  
Gamma 72  
49,8x14,5cm 19<sup>1/2</sup>"x5<sup>45/64</sup>"

Gres spessorato L2 /  
Extra thick porcelain  
stoneware L2  
20mm

Formati / Sizes  
60x120cm 24"x48"  
60x60cm 24"x24"

# Colors.





## Varianti / Variations

- 01. Line
- 02. Dot
- 03. Mark

## Finiture / Finishes

nat

Materiale / Material  
Gres porcellanato /  
Porcelain stoneware

9mm

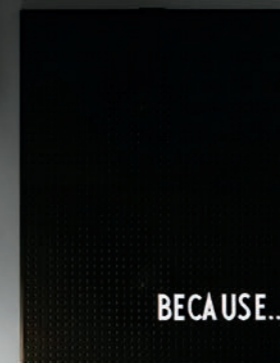
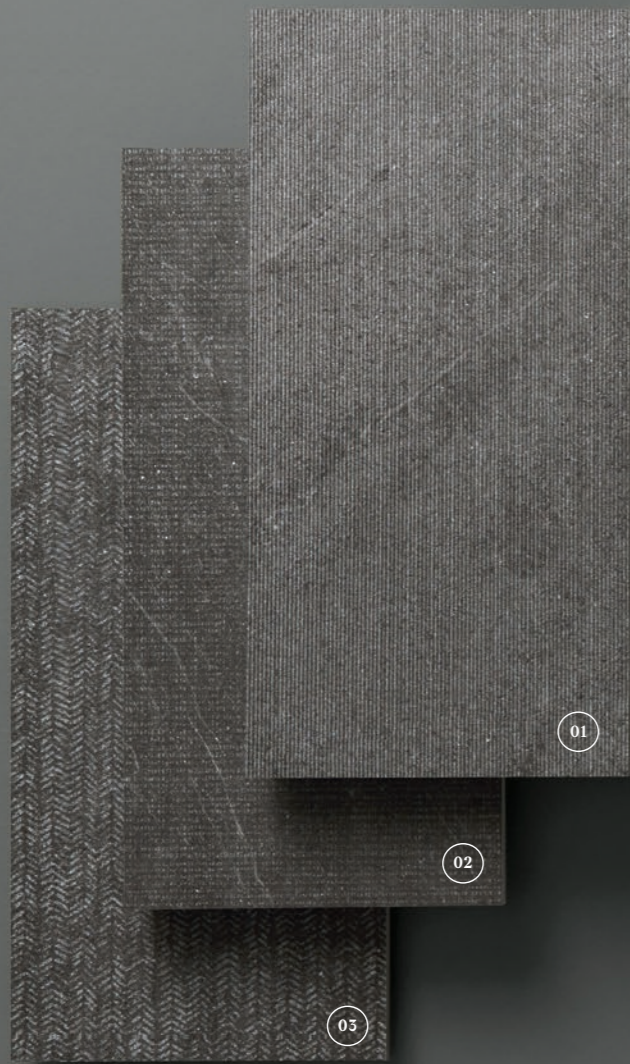
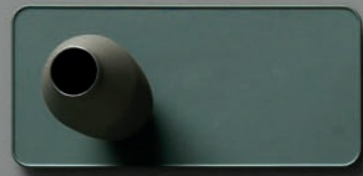
## Formati / Sizes

60x60cm 24"x24"  
30x60cm 12"x24"

Line, Dot e Mark sono le tre varianti sui fondi in finitura naturale declinate sui quattro colori della serie, che riproducono graficamente lavorazioni tipiche della pietra e texture del mondo tessile. Si integrano con le tonalità del fondo dando l'illusione di un rilievo, in realtà perfettamente pulibile. Ricreano leggeri effetti materici combinabili alle finiture naturale e lappata dei moduli di base.

Line, Dot and Mark are the three background variations with a natural finish available in the series' four colour tones, which graphically reproduce traditional stone processing and the look and feel of textiles. These are integrated with the colour tones of the background giving the illusion of texture while actually being perfectly easy to clean. They recreate subtle tactile effects which can be combined with the natural and honed finishes of the basic modules.

02a.



OS

# 02b.



Decori Slimtech /  
Slimtech Decors

- 01. Graf Next Gray
- 02. Graf Next Dark
- 03. Graf Next Taupe

Materiale / Material  
Gres porcellanato laminato /  
Laminated porcelain stoneware  
6mm

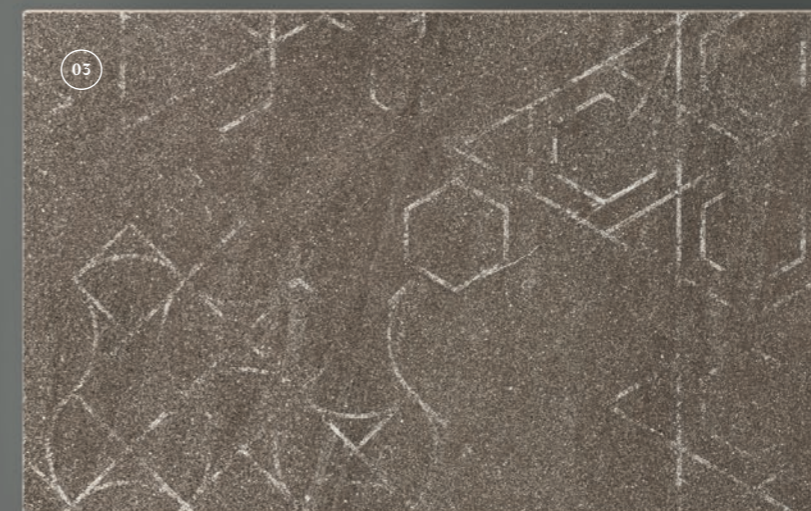
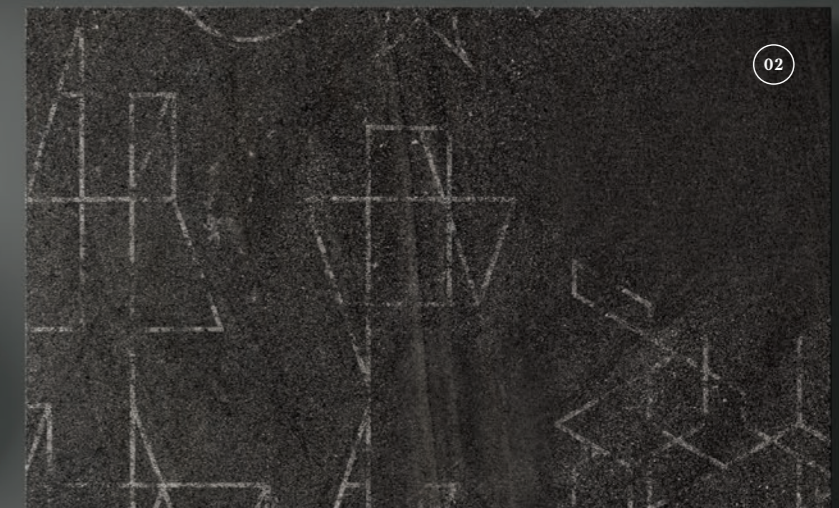
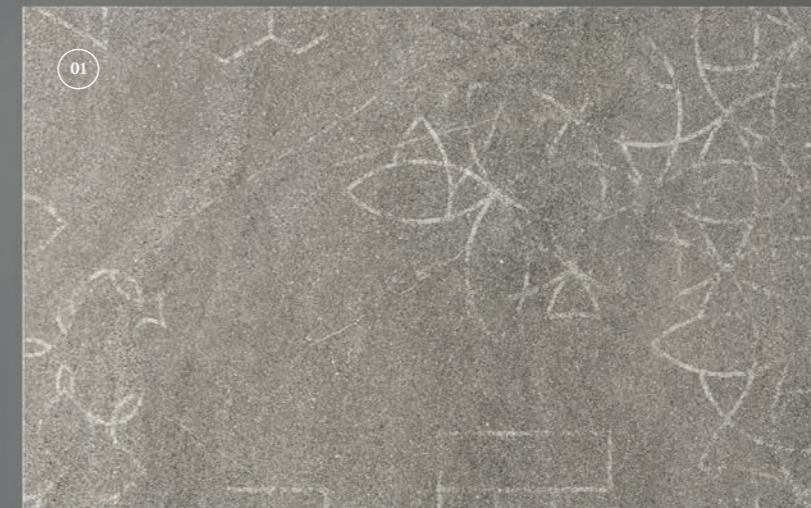
Finiture / Finishes  
nat

Formati / Sizes  
120x260cm 48"x102"

In questo decoro eclettico e discontinuo tracce di pattern geometrici affiorano dalla pietra, evocando graffiti rupestri che sembrano provenire dal futuro. Disponibile in grandi lastre Slimtech e in tre colori, Graf contamina in modo creativo lo spirito minerale della collezione con codici prettamente umani.

In this eclectic and discontinuous decoration, traces of geometric patterns emerge from the stone, evoking rock carvings that seem to come from the future. Available in large Slimtech slabs and in three colours, Graf creatively contaminates the collection's mineral spirit with purely human codes.

# Decors.



# 02c.



## Mosaici / Mosaics

- 01. Mosaico 144
- 02. Mosaico Mix
- 03. Muretto

Materiale / Material  
Gres porcellanato /  
Porcelain stoneware  
9mm

## Formato / Size

- Mosaico 144  
30x30 cm    12"x12"
- Muretto  
30x60 cm    12"x24"
- Mosaico Mix  
30x30 cm    12"x12"

I mosaici decorativi: Muretto, Mosaico Mix e Mosaico 144 sono proposti nei quattro colori della collezione. Geometrie, ispirazioni ed effetti di grande impatto da scegliere in base all'ambiente e allo stile del progetto.

Decorative mosaics: Muretto, Mosaico Mix and Mosaico 144 are proposed in the four colours of the collection. Geometrical shapes, stimuli and surfaces with great impact to choose from according to the setting and the style of the project.

# Mosaics.





03.

# The Collection.

03a.

Next Gray.

WALL  
Mark Next Gray 30x60  
Gamma 72 Next Gray

FLOOR  
Next Gray 60x120 nat



Next Gray 60x120 nat



WALL  
Gamma 72 Next Gray

FLOOR  
Next Gray 60x120 nat



Next Gray 90x90 lapp



Mark Next Gray 30x60



DESK  
Next Dark 120x260

WALL  
Next Gray 120x260  
Graf Next Dark 120x260

FLOOR  
Next Gray 120x120



WALL  
Next Dark 120x260

FLOOR  
Next Gray 120x120

# 03b.

Nextone propone una pietra ceramica unica e originale, per scenari che le estese superfici rese possibili dalle lastre di Slimtech imprimono nella memoria. È quello che accade in questo concept store, dall'audace contrasto tra la forza quasi ancestrale dell'effetto pietra e il ricercato design di arredi e complementi.

Nextone offers a unique and original ceramic stone for settings which the extensive surfaces, made possible by Slimtech slabs, imprint on your memory. This is what happens in this concept store, which features a bold contrast between the almost ancestral strength of the stone effect and the sophisticated design of the furnishings and accessories.

# Next Taupe.

WALL  
Next Taupe 120x260

FLOOR  
Next Taupe 120x120





WALL  
Next Taupe 120x260

FLOOR  
Next Taupe 120x120



Mosaico 144 Next Taupe



Mosaico Mix Next Taupe

Grigio con una nota di marrone chiaro, Next Taupe regala alle superfici un calore avvolgente, morbido e materico. Un'atmosfera di intimo relax ideale in tutti ambienti del vivere contemporaneo.

Grey with a slight touch of brown, Next Taupe gives surfaces an enveloping, soft and material warmth. An atmosphere of intimate relaxation, ideal for any contemporary living environment.

WALL  
Next Taupe 30x60 nat  
Mosaico 144 Next Taupe  
Mosaico Mix Next Taupe

FLOOR  
Next Taupe 60x60 nat





Next Taupe 60x120 nat



la nuova Europa:  
il gruppo CoBrA e il Situazionismo



# 03c.

Next Dark esprime eleganza e personalità, creando un ambiente dalle tonalità scure dove si stagliano i colori dei complementi d'arredo. Adatto a originali contesti abitativi così come a spazi commerciali di design.

Next Dark expresses elegance and personality, creating an environment with dark shades where the colours of the furnishing accessories stand out. Suitable for unconventional living contexts as well as commercial space design.

# Next Dark.



Line Next Dark 30x60



WALL  
Line Next Dark 30x60

FLOOR  
Dot Next Dark 60x60

Line Next Dark 30x60





Graf Next Dark 120x260



WALL  
Next Dark 120x260

FLOOR  
Next Dark 120x120

Un grande living, ricco di chiaroscuri, che attorno al temperamento materico delle lastre di Next Dark costruisce un ambiente dall'eleganza discreta. La finitura nat del pavimento Slimtech stempera la luce del giorno in un riverbero morbido e diffuso.

A large living room, characterized by light and dark effects, which creates a discreetly elegant environment around the material temperament of the Next Dark slabs. The honed finish of the 120x120 Slimtech floor tones down daylight with a soft and diffused effect.

Next Dark 120x120





Next Dark 60x60 lapp

# 03d.

Una full immersion di luce che riempie l'habitat quotidiano. Next White è la cromia che imprime a pareti e pavimentazioni la calda freschezza della pietra, ampliando lo spazio circostante. Un colore versatile che dona armonia cromatica ad ogni ambiente.

A full immersion of light that fills the daily habitat. Next White is the colour scheme that gives walls and floors the warm freshness of stone, expanding the surrounding space. A versatile colour that gives chromatic harmony to any environment.

# Next White.

FURNITURE  
Next White 120X260

FLOOR  
Next White 90x90 nat





Perfettamente coordinabile col pavimento in gres porcellanato, Slimtech riveste il grande mobile cucina e l'isola centrale, facendone i protagonisti indiscussi dell'ambiente. L'estensione della lastra sottile esalta il fascino di Nextone, una sorta di pietra ideale nata dalla calibrata sintesi di più riferimenti naturali.

Perfectly coordinated with the porcelain stoneware floor, Slimtech covers the large kitchen cabinet and the central island, making them the room's standout features. The extension of the slim slab enhances the charm of Nextone, a kind of ideal stone created from the calibrated synthesis of several natural references.

FURNITURE  
Next White 120X260

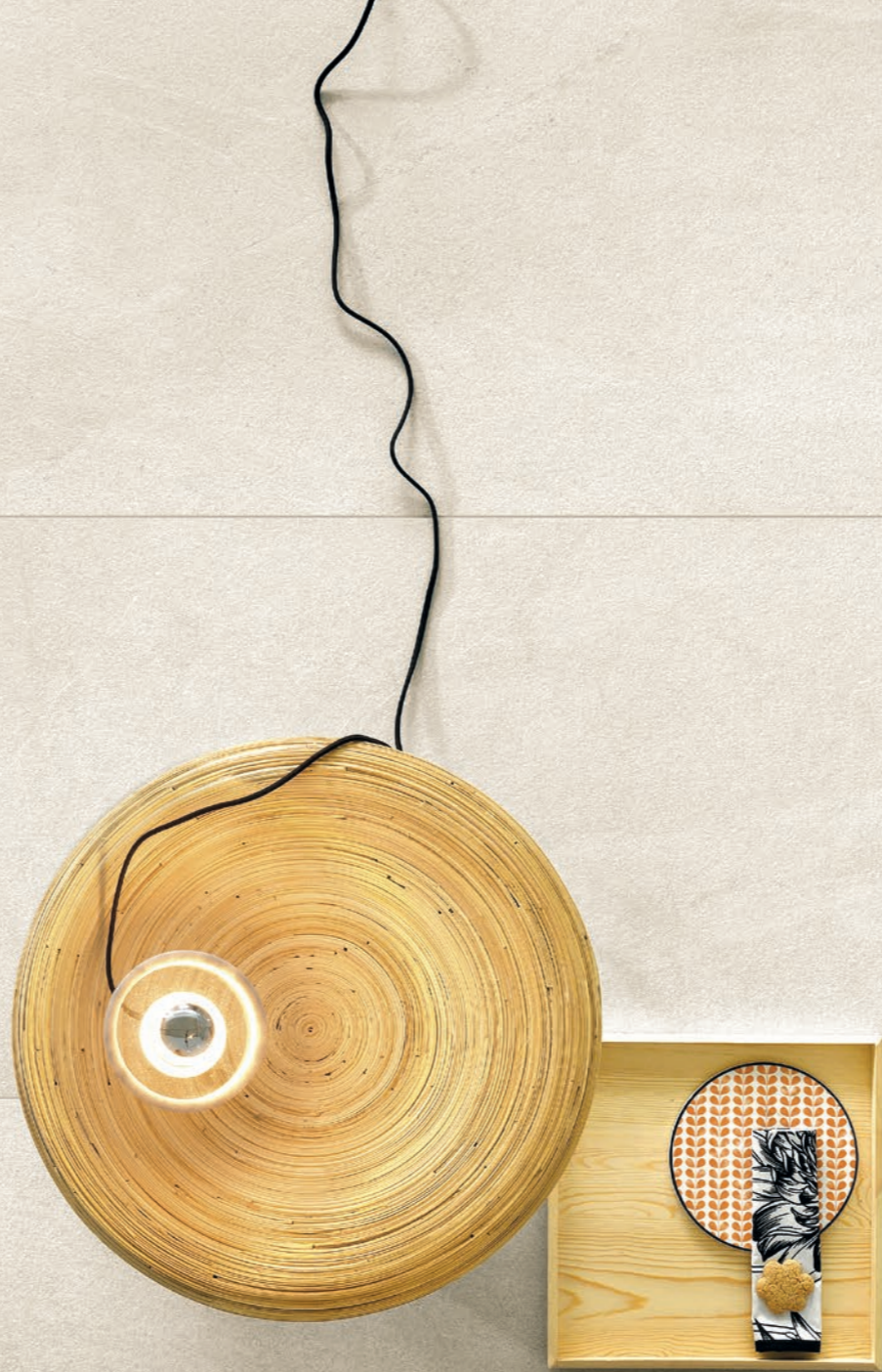
FLOOR  
Next White 90x90 nat



WALL  
Dot Next White 30x60  
FLOOR  
Next White 60x120 nat

Next White 60x120 nat

Lea Ceramiche



Nextone

# 03e.

Nextone conquista le pavimentazioni degli spazi esterni grazie alle eccezionali performance della gamma L2 in 20 mm di spessore. Resistenza e durevolezza in un affascinante effetto pietra: un must in ogni contesto outdoor.

Disponibile in due formati Nextone L2 può essere posata a secco su erba, ghiaia e sistemi sopraelevati; oppure incollata su massetto nelle aree carrabili. Una soluzione completa per dare agli spazi esterni un originale effetto pietra: intensamente naturale, resistente, antiscivolo e inalterabile nel tempo.

Nextone conquers the flooring of outdoor spaces thanks to the 20mm thick L2 range which guarantees great technical characteristics. Resistance and durability with a fascinating stone effect, a must for outdoor settings.

Available in two formats, Nextone L2 can be laid dry on grass, gravel and raised systems; or glued on screed in driveway areas. A complete solution to give outdoor spaces an original stone effect: intensely natural, resistant, non-slip and durable.

# Outdoor.





Next Grey 60x120 grip L2

Lea Ceramiche



Next Taupe 60x120 grip L2    Next Dark 60x60 grip L2



Next Gray 60x120 grip L2

04.

Info.



Dot Next White 30x60

## Lastre ceramiche sottili di qualità superiore.

Superior quality thin porcelain slabs.



**MASSIMI STANDARD QUALITATIVI E PRESTAZIONALI.**  
Highest standards in quality and performance.



**LASTRE SUPERCOMPATTE ED ELASTICHE.**  
Highly compact and elastic slabs.



**RESA ESTETICA ECCELLENTE.**  
Excellent aesthetic look.



**STRAORDINARIA EXTRA-RESISTENZA.**  
Extraordinary added resistance.



**SOSTENIBILITÀ AMBIENTALE ELEVATA.**  
Highly eco-friendly.



**IDEALE PER RISTRUTTURARE SENZA DEMOLIRE.**  
Ideal for renovation without demolition.



# THINK ZERO

## Lastre ceramiche nate per essere sostenibili.

Ceramic slabs born to be sustainable

### CO<sub>2</sub> NEUTRAL

#### THINK ZERO É LA RIVOLUZIONE PER UNA CERAMICA SOSTENIBILE

Le lastre ceramiche ultrasottili riducono gli impatti ambientali senza ridurre le performance.

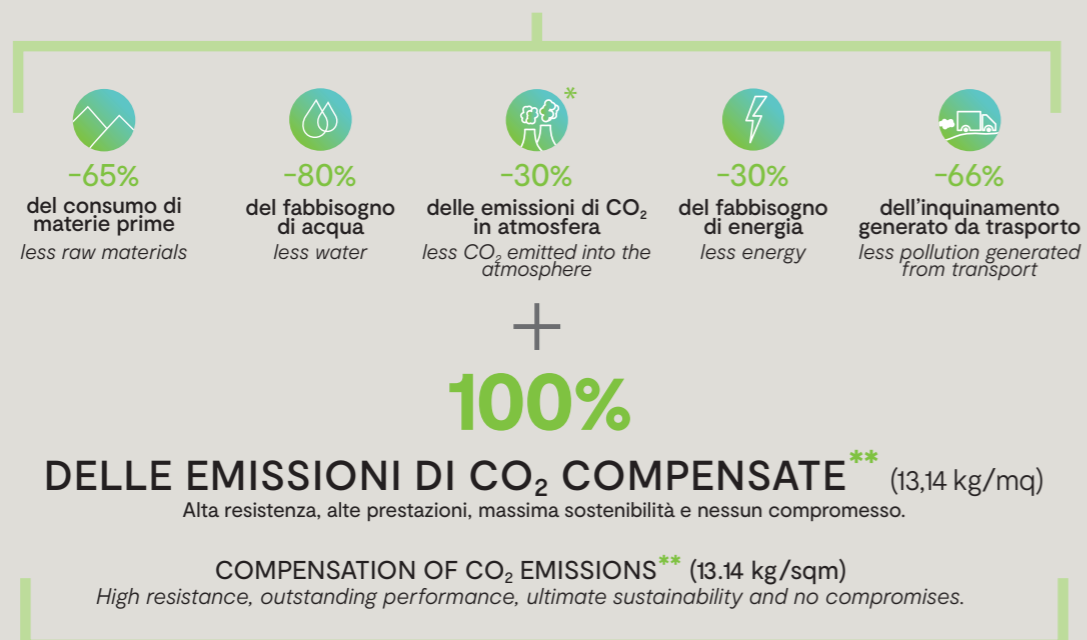
*THINK ZERO IS THE REVOLUTION FOR SUSTAINABLE CERAMIC TILES*  
The ultra-thin ceramic slabs reduce environmental impacts without reducing performance.



#### NON SOLO MENO SPESSORE

ridotto fino ad un massimo di 3 mm.

LESS THICKNESS  
to maximum 3 mm.



\* I dati fanno riferimento a un prodotto a spessore sottile, confrontato con un grès porcellanato di spessore tradizionale. / The data refers to ultra-thin slabs when compared to standard-thickness porcelain stoneware tile.

\*\* Dalla partecipazione a progetti internazionali di abbattimento della CO<sub>2</sub> nelle città più inquinate. Scopri di più su panariagroup.it/think-zero. / From participation in international projects of reduction of CO<sub>2</sub> in the most polluted cities. Learn more on panariagroup.it/en/think-zero.



SLIMTECH



[leaceramiche.it/think-zero](https://leaceramiche.it/think-zero)

# PROTECT

## Per un abitare sano, sicuro e protetto.

Pavimenti e rivestimenti antibatterici ad altissime performance.

### TO LIVE HEALTHILY, SAFE AND SECURE.

Antimicrobial floor and wall coverings with the highest performance.



#### 1. AZIONE POTENTE.

Elimina i batteri e ne impedisce la proliferazione.

#### POWERFUL ACTION.

Eliminates microbes and prevents their reproduction.



#### 2. PROTEZIONE CONTINUA.

Sempre attivo, 24 ore su 24, con e senza luce solare.

#### CONTINUOUS PROTECTION.

Always active, 24 hours a day, with and without sunlight.



#### 3. EFFICACIA ETERNA.

Grazie alla tecnologia integrata in modo permanente nel prodotto.

#### ETERNAL EFFECTIVENESS.

Thanks to the technology permanently integrated into the product.

with MICROBAN®



Lea Ceramiche

protect.panariagroup.it

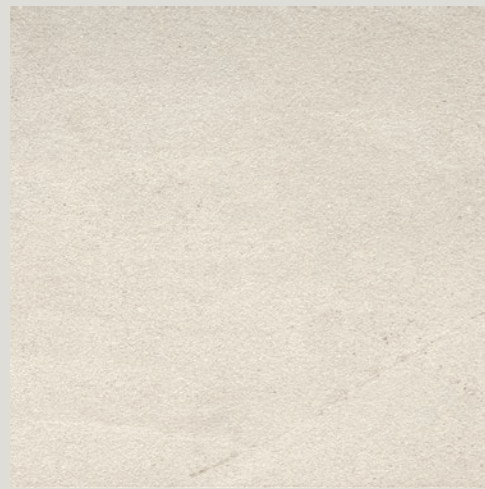


PROTECT®

Antibacterial for Life.

Next White

Next Gray



Next Taupe

Next Dark



# Varianti Gres / Stoneware Variations

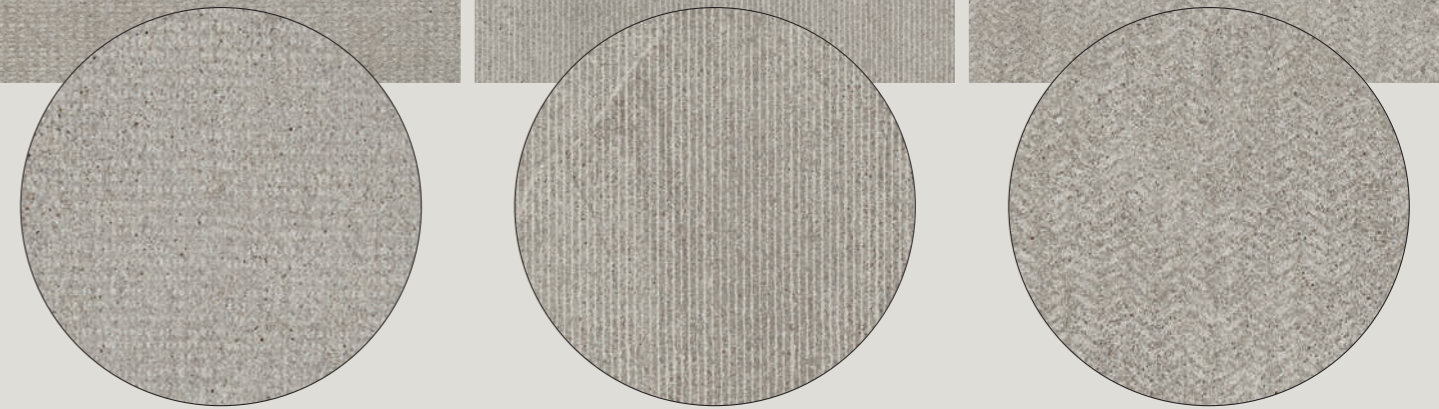
Dot Line Mark

Next White Next White Next White



Dot Line Mark

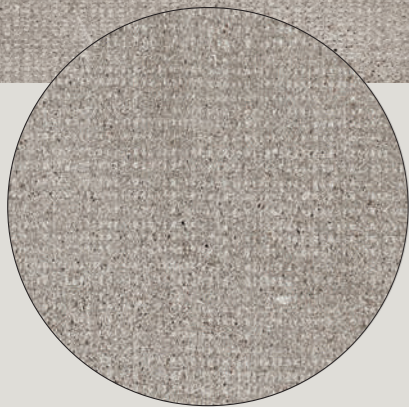
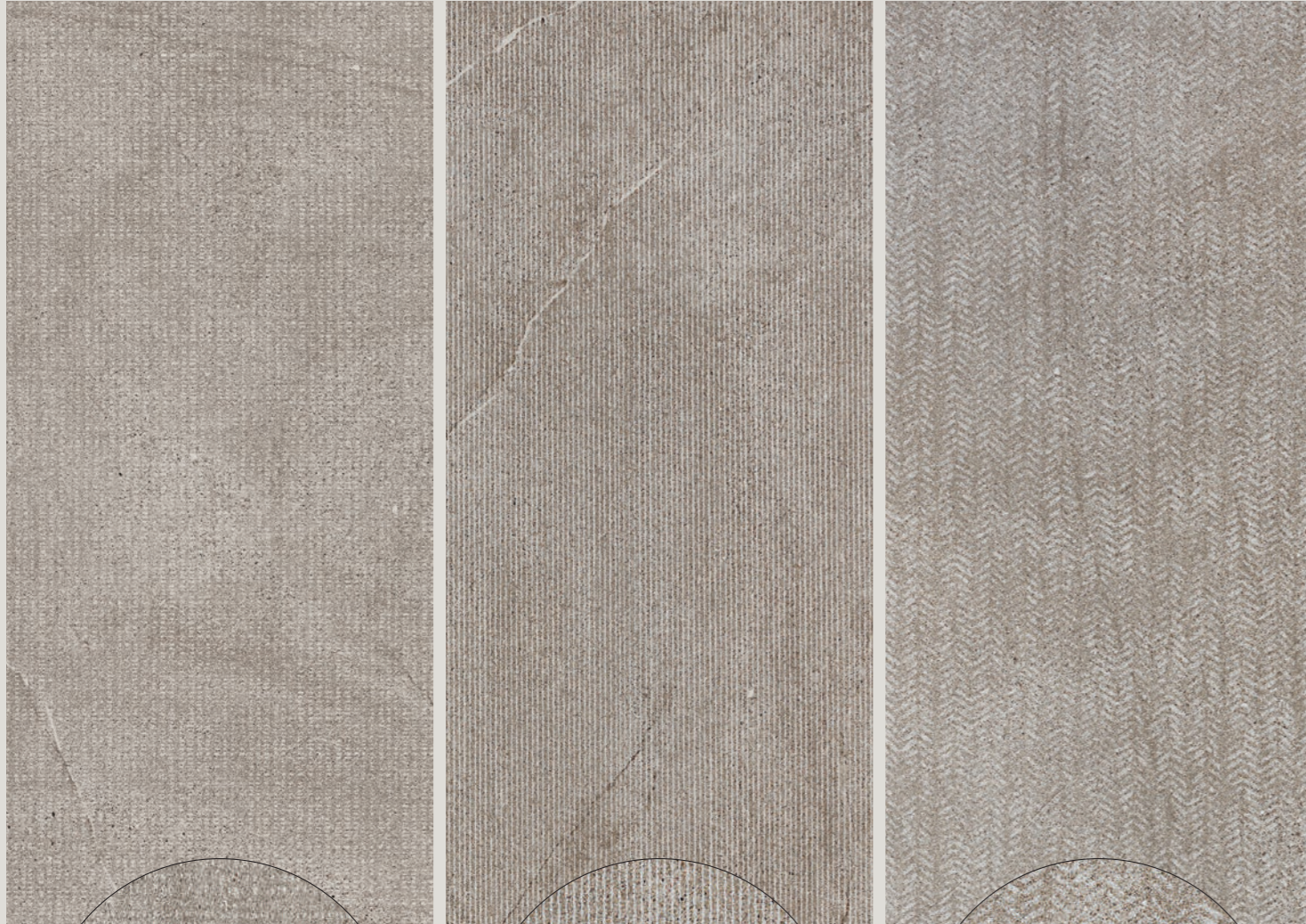
Next Gray Next Gray Next Gray



Varianti Gres / Stoneware Variations

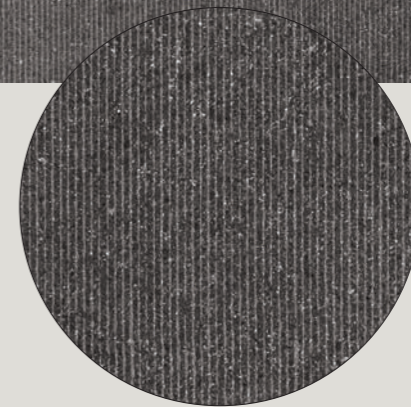
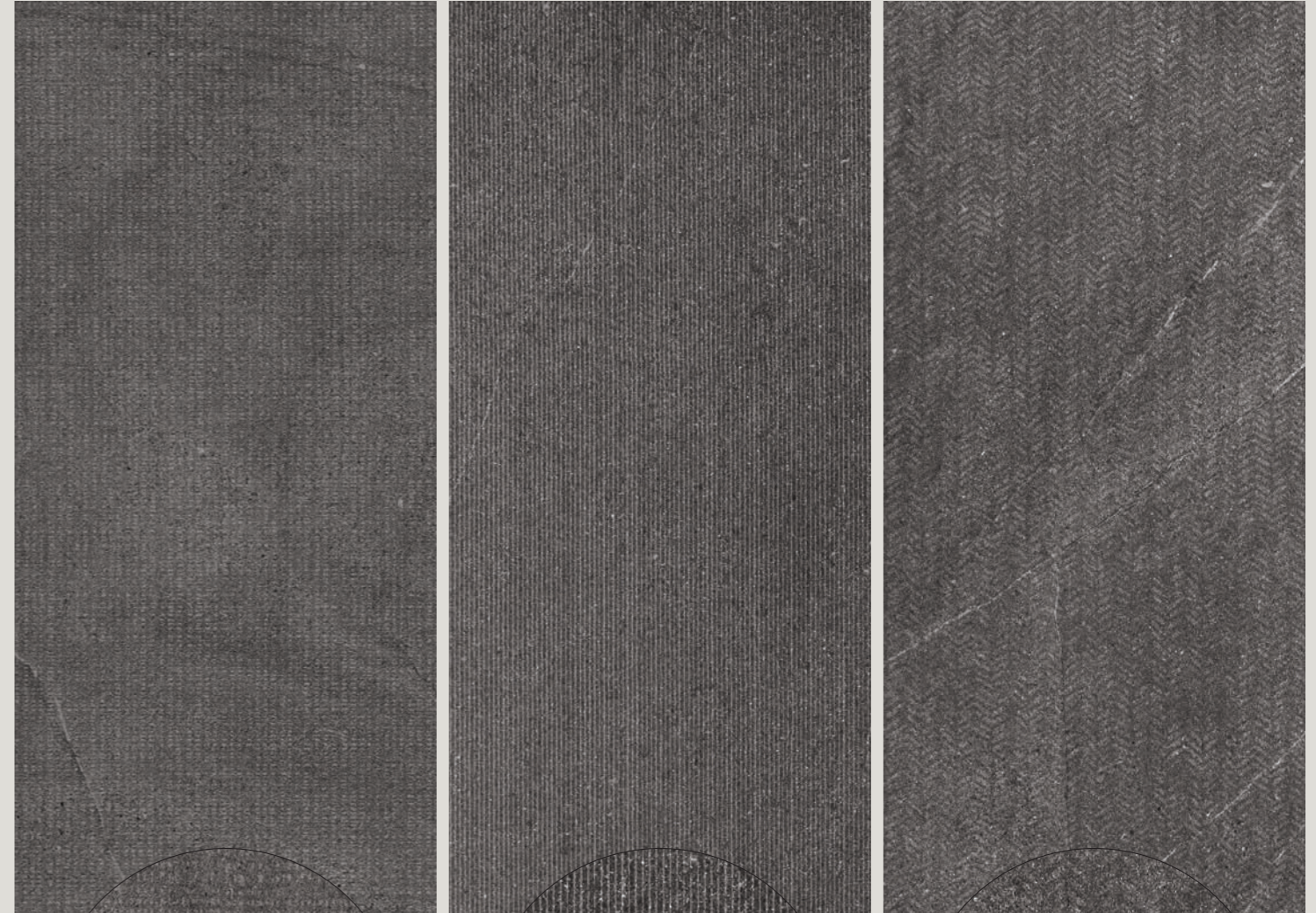
Dot Line Mark

Next Taupe



Dot Line Mark

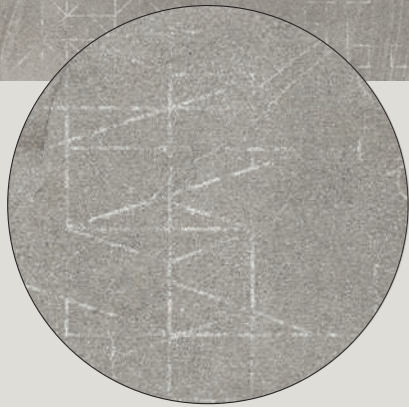
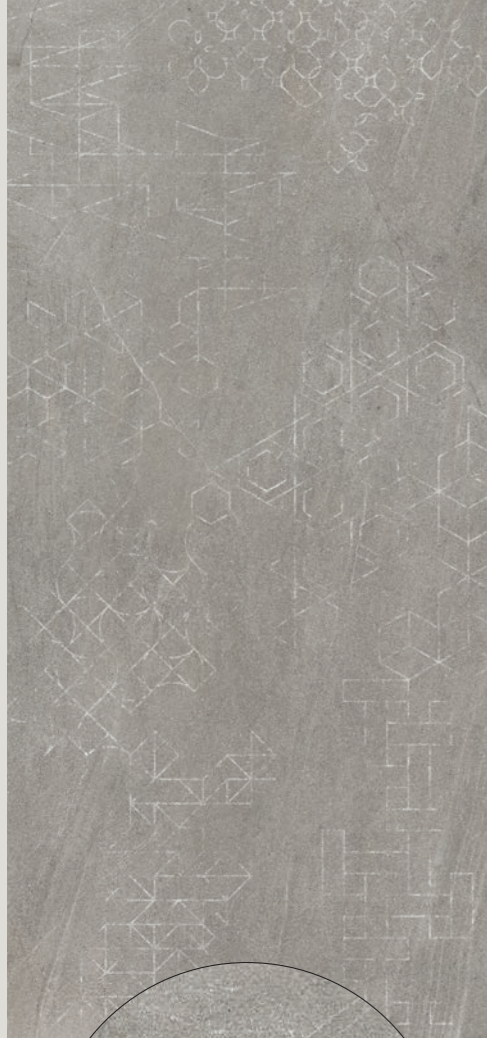
Next Dark



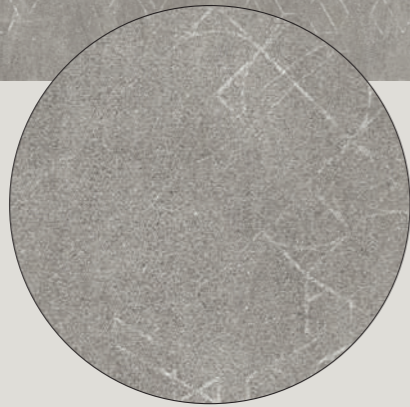
Graf



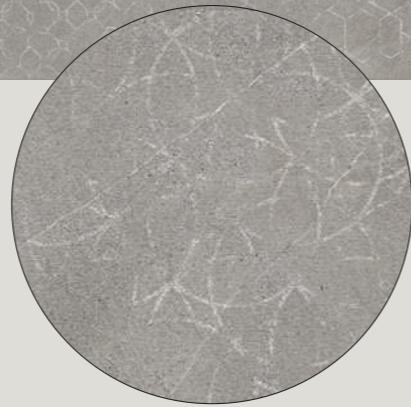
Next Gray A



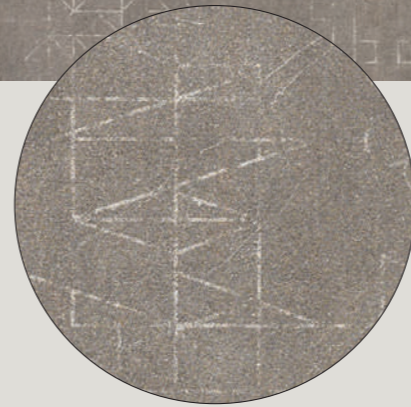
Next Gray B



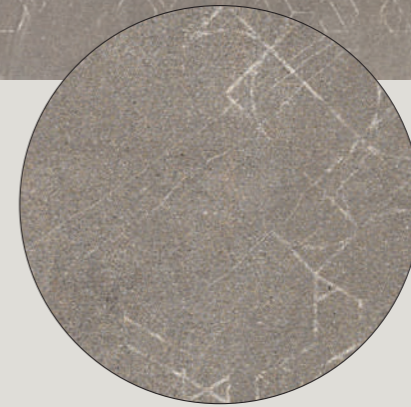
Next Gray C



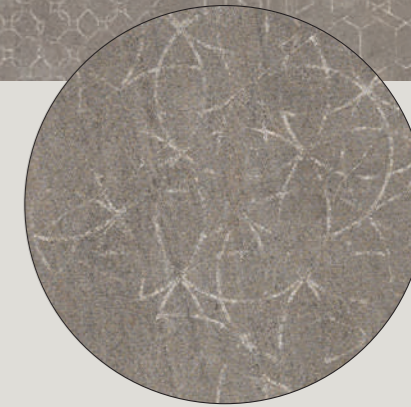
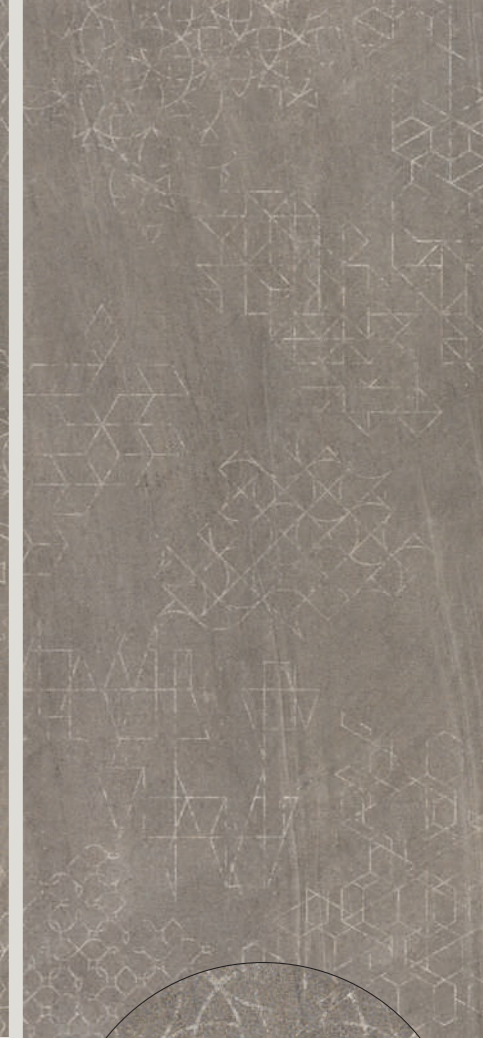
Next Taupe A



Next Taupe B



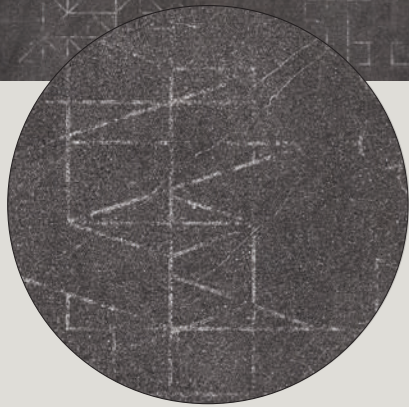
Next Taupe C



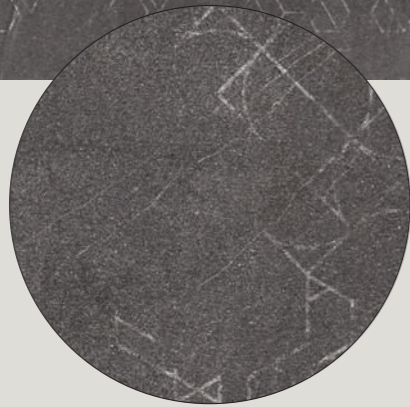
Graf



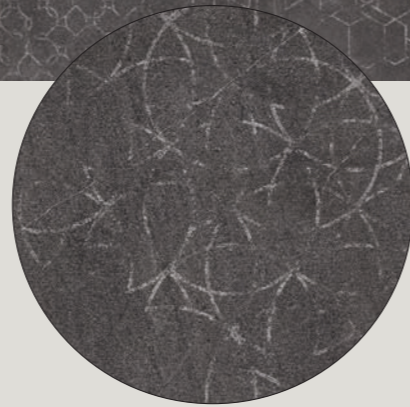
Next Dark A



Next Dark B



Next Dark C

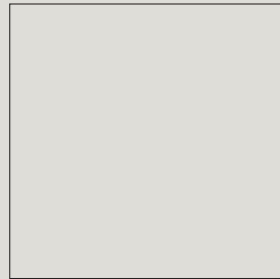


## Formati Slimtech / Slimtech Sizes <sup>LR7</sup>

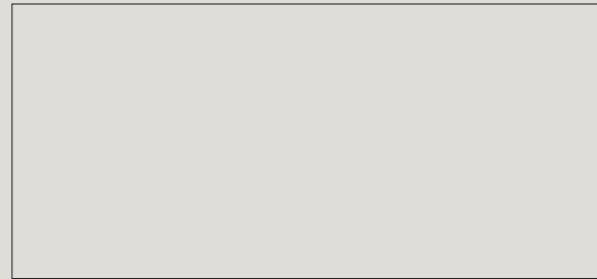


Gres porcellanato laminato  
/Laminated porcelain stoneware  
Spessore/thickness: 6mm

**PROTECT**  
ANTIBATTERICO - ANTIMICROBIAL



120x120cm  
48"x48"  
NAT



120x260cm  
48"x102"  
NAT

## Finiture / Finishes

### Nat



residenziale  
residential



commerciale leggero  
light commercial



commerciale intensivo  
intensive commercial

## Decori Slimtech / Slimtech Decors



### Graf

Next Gray  
Next Taupe  
Next Dark

#### Graf A



120x260cm  
48"x102"

#### Graf B



120x260cm  
48"x102"

#### Graf C



120x260cm  
48"x102"

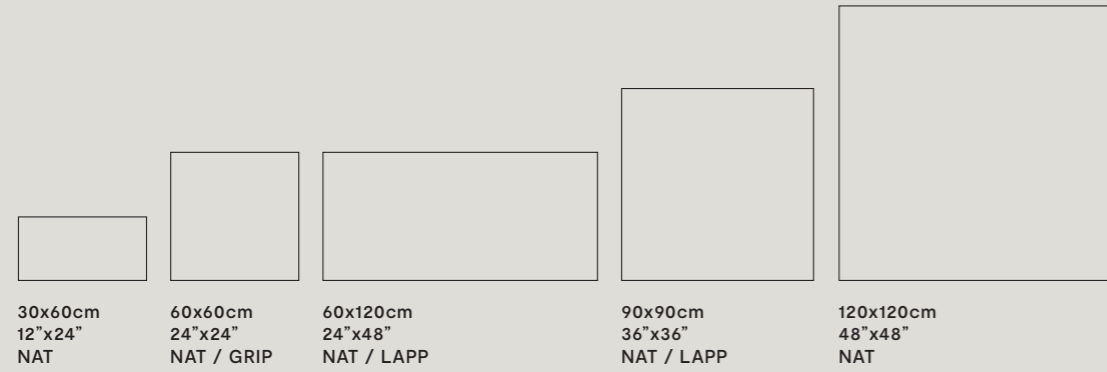
## Formati Gres / Stoneware Sizes <sup>LR71</sup>



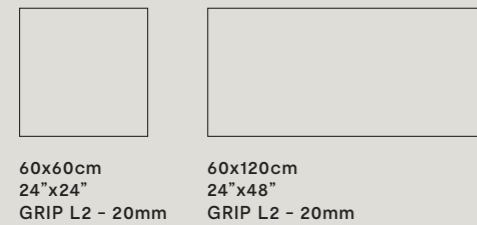
### Gres porcellanato / Porcelain stoneware Spessore/thickness: 9mm



**PR( )TECT**  
ANTIBATTERICO - ANTIMICROBIAL



### Spessore/thickness: 20mm\*



\* Protezione antibatterica non presente  
No antimicrobial protection

#### Destinazioni d'uso / Intended use



## Finiture / Finishes

### Nat



residenziale  
residential



commerciale leggero  
light commercial



commerciale intensivo  
intensive commercial

### Lapp



residenziale  
residential



commerciale leggero  
light commercial



commerciale intensivo  
intensive commercial

### Grip / Gip L2 - 20mm



esterno  
outdoor

## Formati speciali / Special sizes

### Gramma 72

Next Gray  
Next Taupe  
Next Dark  
Next White

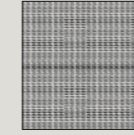


49,8x14,5cm  
19 1/2" x 5 45/64"  
NAT

## Varianti / Variations <sup>LR71</sup>

### Dot

Next Gray  
Next Taupe  
Next Dark  
Next White



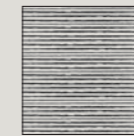
60x60cm  
24"x24"  
NAT



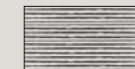
30x60cm  
12"x24"  
NAT

### Line

Next Gray  
Next Taupe  
Next Dark  
Next White



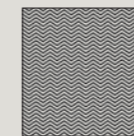
60x60cm  
24"x24"  
NAT



30x60cm  
12"x24"  
NAT

### Mark

Next Gray  
Next Taupe  
Next Dark  
Next White



60x60cm  
24"x24"  
NAT



30x60cm  
12"x24"  
NAT

## Mosaici / Mosaics

### Muretto

Next Gray  
Next Taupe  
Next Dark  
Next White



30x60 cm  
12"x24"  
NAT

### Mosaico Mix\*

Next Gray  
Next Taupe  
Next Dark  
Next White



30x30 cm  
12"x12"  
NAT

### Mosaico 144

Next Gray  
Next Taupe  
Next Dark  
Next White



30x30 cm  
12"x12"  
NAT

\*superfici mixate: nat + dot + line + mark / Mixed surfaces: nat + dot + line + mark

## Fondi / Plain tiles

				Next White	Next Gray	Next Taupe	Next Dark
120x260cm 48"x102"	⊕S	6mm	NAT	LS6NX30	LS6NX10	LS6NX20	LS6NX00
120x120cm 48"x48"	⊕S	6mm	NAT	LS8NX30	LS8NX10	LS8NX20	LS8NX00
120x120cm 48"x48"	⊕	9mm	NAT	LG8NX30	LG8NX10	LG8NX20	LG8NX00
60x120cm 24"x48"	⊕	9mm	NAT	LGXNX30	LGXNX10	LGXNX20	LGXNX00
			LAPP	LGXNXL3	LGXNXL1	LGXNXL2	LGXNXL0
60x60cm 24"x24"	⊕	9mm	NAT	LGWNX30	LGWNX10	LGWNX20	LGWNX00
			GRIP	LGWNX35	LGWNX15	LGWNX15	LGWNX05
30x60cm 12"x24"	⊕	9mm	NAT	LGVNX30	LGVNX10	LGVNX20	LGVNX00
90x90cm 36"x36"	⊕	9mm	NAT	LG9NX53	LG9NX51	LG9NX52	LG9NX50
			LAPP	LG9NXX3	LG9NXX1	LG9NXX2	LG9NXX0
60x120cm 24"x48"	⊕	20mm	GRIP	LGXNX63	LGXNX61	LGXNX62	LGXNX60
60x60cm 24"x24"	⊕	20mm	GRIP	LGWNX93	LGWNX91	LGWNX92	LGWNX90

## Decori / Decors

				Next White	Next Gray	Next Taupe	Next Dark
Graf A	⊕S	6mm	120x260cm 48"x102"	-	LS6NX1A	LS6NX2A	LS6NX0A
Graf B	⊕S	6mm	120x260cm 48"x102"	-	LS6NX1B	LS6NX2B	LS6NX0B
Graf C	⊕S	6mm	120x260cm 48"x102"	-	LS6NX1C	LS6NX2C	LS6NX0C

## Varianti / Variations

				Next White	Next Gray	Next Taupe	Next Dark
Dot	⊕	9mm	30x60cm 12"x24"	LGVNX53	LGVNX51	LGVNX52	LGVNX50
			60x60cm 24"x24"	LGWNX53	LGWNX51	LGWNX52	LGWNX50
Line	⊕	9mm	30x60cm 12"x24"	LGVNX63	LGVNX61	LGVNX62	LGVNX60
			60x60cm 24"x24"	LGWNX63	LGWNX61	LGWNX62	LGWNX60
Mark	⊕	9mm	30x60cm 12"x24"	LGVNX73	LGVNX71	LGVNX72	LGVNX70
			60x60cm 24"x24"	LGWNX73	LGWNX71	LGWNX72	LGWNX70
Gamma 72 49,8x14,5cm 19 <sup>1/2</sup> "x5 <sup>45/64</sup> "	⊕	9mm	NAT	LGZNXL03	LGZNXL01	LGZNXL02	LGZNXL00

## Formati speciali / Special sizes

				Next White	Next Gray	Next Taupe	Next Dark
Gamma 72 49,8x14,5cm 19 <sup>1/2</sup> "x5 <sup>45/64</sup> "	⊕	9mm	NAT	LGZNXL03	LGZNXL01	LGZNXL02	LGZNXL00


## Mosaici / Mosaics

				Next White	Next Gray	Next Taupe	Next Dark
Muretto	⊕	9mm	30x60cm 12"x24"	LG9NX03	LG9NX01	LG9NX02	LG9NX00
Mosaico Mix*	⊕	9mm	30x30cm 12"x12"	LG9NX23	LG9NX21	LG9NX22	LG9NX20
Mosaico 144	⊕	9mm	30x30cm 12"x12"	LG9NX13	LG9NX11	LG9NX12	LG9NX10

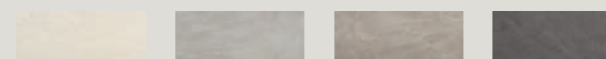
\*superfici mixate: nat + dot + line + mark / Mixed surfaces: nat + dot + line + mark





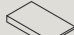
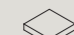
## Pezzi Speciali / Trims

Spessore/thickness: 9mm

 gres porcellanato

Next White Next Gray Next Taupe Next Dark



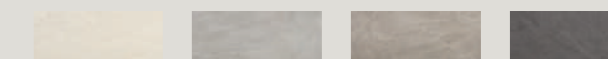
Sezione gradino 4cm / 1 <sup>9</sup> / <sub>16</sub> "							
Battiscopa		5,5x60cm 2 <sup>1</sup> / <sub>64</sub> "x24" rett	NAT	LGRNX30	LGRNX10	LGRNX20	LGRNX00
			LAPP	LGRNXL3	LGRNXL1	LGRNXL2	LGRNXL0
Gradino Plus*		35x120cm 13 <sup>3</sup> / <sub>4</sub> "x48" rett	NAT	LGDNX30	LGDNX10	LGDNX20	LGDNX00
			LAPP	LGDNX80	LGDNX60	LGDNX70	LGDNX50
Angolo dx Gradino Plus*		35x120cm 13 <sup>3</sup> / <sub>4</sub> "x48" rett	NAT	LGDNX31	LGDNX11	LGDNX21	LGDNX01
			LAPP	LGDNX81	LGDNX61	LGDNX71	LGDNX51
Angolo sx Gradino Plus*		35x120cm 13 <sup>3</sup> / <sub>4</sub> "x48" rett	NAT	LGDNX32	LGDNX12	LGDNX22	LGDNX02
			LAPP	LGDNX82	LGDNX62	LGDNX72	LGDNX52
Gradino Plus*		35x60cm 13 <sup>3</sup> / <sub>4</sub> "x24" rett	GRIP	LG9NXG3	LG9NXG1	LG9NXG2	LG9NXG0
Angolo Gradino Plus*		35x60cm 13 <sup>3</sup> / <sub>4</sub> "x24" rett	GRIP	LG9NXA3	LG9NXA1	LG9NXA2	LG9NXA0




## Pezzi Speciali / Trims

Spessore/thickness: 20mm

 L2

Next White Next Gray Next Taupe Next Dark



Griglia*		15x60cm 6"x24" rett	GRIP	LG1NX30	LG1NX10	LG1NX20	LG1NX00
Griglia Angolare sx*		15x60cm 6"x24" rett	GRIP	LG1NX32	LG1NX12	LG1NX22	LG1NX02
Griglia Angolare dx*		15x60cm 6"x24" rett	GRIP	LG1NX31	LG1NX11	LG1NX21	LG1NX01
Costa Toro*		30x60cm 12"x24" rett	GRIP	LGDNXF3	LGDNXF1	LGDNXF2	LGDNXF0
Costa Toro Angolare sx*		30x60cm 12"x24" rett	GRIP	LGDNXB7	LGDNXB3	LGDNXB5	LGDNXB1
Costa Toro Angolare dx*		30x60cm 12"x24" rett	GRIP	LGDNXB6	LGDNXB2	LGDNXB4	LGDNXB0
Costa Retta*		30x60cm 12"x24" rett	GRIP	LGDNXC3	LGDNXC1	LGDNXC2	LGDNXC0
Costa Retta Angolare sx*		30x60cm 12"x24" rett	GRIP	LGDNXA7	LGDNXA3	LGDNXA5	LGDNXA1
Costa Retta Angolare dx*		30x60cm 12"x24" rett	GRIP	LGDNXA6	LGDNXA2	LGDNXA4	LGDNXA0
Costa Toro Step*		30x60cm 12"x24" rett	GRIP	LGDNXJ3	LGDNXJ1	LGDNXJ2	LGDNXJ0
Costa Retta Step*		30x60cm 12"x24" rett	GRIP	LGDNXG3	LGDNXG1	LGDNXG2	LGDNXG0
Costa Retta con Gocciolatoio*		 30x60cm 12"x24" rett	GRIP	LGDNXH3	LGDNXH1	LGDNXH2	LGDNXH0
Costa Toro con Gocciolatoio*		 30x60cm 12"x24" rett	GRIP	LGDNXY3	LGDNXY1	LGDNXY2	LGDNXY0

\* Su richiesta. Per maggiori informazioni circa quantità minime e tempi di consegna rivolgersi all'ufficio commerciale. / Upon request. For more information about minimum quantities and delivery times please contact the sales department.

## Caratteristiche tecniche / Technical characteristics



Gres porcellanato laminato /Laminated porcelain stoneware SLIMTECH 6mm		Conforme/according to: ISO 13006 G (Gruppo/Group Bla) EN 14411 G (Gruppo/Group Bla) ANSI A137.3 (Gauged porcelain slabs)	
	Metodo di prova /Test method	Requisiti prescritti /Required values	Valori medi /Average values
Assorbimento d'acqua /Water absorption	ISO 10545-3 ASTM C373	≤ 0,5%	0,1%
Resistenza a flessione /Modulus of rupture	ISO 10545-4 ASTM C1505	≥ 35 N/mm <sup>2</sup> ≥ 6.000 PSI	45 N/mm <sup>2</sup> ≥ 6.000 PSI
Resistenza all'abrasione profonda /Resistance to deep abrasion	ISO 10545-6 ASTM C1243	≤ 175 mm <sup>3</sup>	Conforme/Compliant
Dilatazione termica lineare /Linear thermal expansion	ISO 10545-8 ASTM C372	Requisito non previsto/No provision Requisito non previsto/No provision	$\alpha \leq 7 \times 10^{-6} \text{ } ^\circ\text{C}^{-1}$ $\alpha \leq 4.4 \times 10^{-6} \text{ } ^\circ\text{F}^{-1} / \alpha \leq 8 \times 10^{-6} \text{ } ^\circ\text{C}^{-1}$
Resistenza alle macchie /Stain resistance	ISO 10545-14 ASTM C1378	Classe/Class 3 Min. Come indicato dal produttore /As indicated by manufacturer	5 Resistente/Resistant A Resistente/Resistant
Resistenza all'attacco chimico* /Chemical resistance	ISO 10545-13 ASTM C650	Come indicato dal produttore /As indicated by manufacturer Come indicato dal produttore /As indicated by manufacturer	LA—HA Resistente/Resistant A Resistente/Resistant
Resistenza al gelo /Frost resistance	ISO 10545-12 ASTM C1026	Nessuna alterazione/No alteration Come indicato dal produttore /As indicated by manufacturer	Resistente/Resistant Resistente/Resistant
Resistenza allo scivolamento /Slip resistance	DIN EN 16165 – Annex B BCR-TORTUS ANSI A326.3	— — —	R10 $\mu > 0,40$ ID - DCOF <sub>0.42</sub> (Dry) - NAT IW - DCOF <sub>0.42</sub> (Wet) - NAT
Reazione al fuoco /Fire reaction	EN 13823 EN 9239-1	CPR (UE) 305/2011, 2000/147/CE, UNI EN 13501-1	Classe/Class A1 (wall) Classe/Class A1 <sub>fl</sub> (floor)
Diffusione di fiamma /Flame spread	ASTM E84	—	Classe/Class A
Stonalizzazione /Shade variation	ANSI A137.3	Come indicato dal produttore /As indicated by manufacturer	V3 Variazioni moderate / Moderate variation

Fuga minima consigliata: vedi Manuale Tecnico Slimtech/minimum suggested joint: refer to Slimtech Technical Manual.  
\*Ad esclusione dell'acido fluoridrico e derivati/excluding hydrofluoric acid and its derivatives

## Caratteristiche tecniche / Technical characteristics



Gres porcellanato / Porcelain stoneware		Conforme / According to: ISO 13006 G (Gruppo/Group Bla) EN 14411 G (Gruppo/Group Bla) ANSI A137.1 Porcelain tiles (P1 Class)	
	Metodo di prova /Test method	Requisiti prescritti /Required values	Valori medi /Average values
Assorbimento d'acqua /Water absorption	ISO 10545-3 ASTM C373	≤ 0,5%	0,05%
Sforzo di rottura S /Breaking strength	ISO 10545-4 ASTM C1505	≥ 1300 N/mm <sup>2</sup> ≥ 250 lbf	2.200 N 9mm 13.600 N 20mm 500 lbf 9mm 2,800 lbf 20mm
Resistenza a flessione /Modulus of rupture	ISO 10545-4	≥ 35 N/mm <sup>2</sup>	50 N/mm <sup>2</sup>
Resistenza all'abrasione profonda /Resistance to deep abrasion	ISO 10545-6 ASTM C1243	≤ 175 mm <sup>3</sup>	145 mm <sup>3</sup>
Dilatazione termica lineare /Linear thermal expansion	ISO 10545-8 ASTM C372	Requisito non previsto/No provision Requisito non previsto/No provision	$\alpha \leq 7 \times 10^{-6} \text{ } ^\circ\text{C}^{-1}$ $\alpha \leq 4.4 \times 10^{-6} \text{ } ^\circ\text{F}^{-1} / \alpha \leq 8 \times 10^{-6} \text{ } ^\circ\text{C}^{-1}$
Resistenza alle macchie /Stain resistance	ISO 10545-14 ASTM C1378	Classe/Class 3 Min. Come indicato dal produttore /As indicated by manufacturer	5 Resistente A Resistant
Resistenza all'attacco chimico* /Chemical resistance	ISO 10545-13 ASTM C650	Come indicato dal produttore /As indicated by manufacturer Come indicato dal produttore /As indicated by manufacturer	LA—HA Resistente/Resistant A Resistant
Resistenza al gelo /Frost resistance	ISO 10545-12 ASTM C1026	Nessuna alterazione/No alteration Come indicato dal produttore /As indicated by manufacturer	Resistente/Resistant Resistant
Resistenza allo scivolamento /Slip resistance	DIN EN 16165 – Annex B DIN EN 16165 – Annex A BCR-TORTUS ANSI A326.3	— — — —	R10 (Nat) / R11 (Grip - Grip L2-20mm) B (Nat) / C (Grip - Grip L2-20mm) $\mu > 0,40$ (Nat - Grip - Grip L2-20mm) ID - DCOF <sub>0.42</sub> (Dry) - NAT - LAPP IW - DCOF <sub>0.42</sub> (Wet) - NAT - LAPP IW+*** - NAT EW - (Grip - Grip L2-20mm)
Resistenza allo scivolamento /Slip resistance	AS/NZS 4586:2013 BS EN 16165 – Annex C	— —	P3 (Nat) / P4 (Grip - Grip L2-20mm) PTV 36+ WET (SI.96) NAT PTV 36+ WET (SI.55) (Grip - Grip L2-20mm)
Reazione al fuoco /Fire reaction	EN 13823 EN 9239-1	CPR (UE) 305/2011, 2000/147/CE, UNI EN 13501-1	Classe / Class A1 (wall) Classe / Class A1 <sub>fl</sub> (floor)
Diffusione di fiamma /Flame spread	ASTM E84	No provision	Class A
Fuga minima consigliata (**) recommended minimum joint (**)	INDOOR OUTDOOR	— —	2mm 5mm circa/ approx.
Stonalizzazione /Shade variation	ANSI A137.1	Come indicato dal produttore /As indicated by manufacturer	V3 Variazioni sostanziali /Substantial variation

(\*) ad esclusione dell'acido fluoridrico e derivati / excluding hydrofluoric acid and its derivatives

(\*\*) salvo diversa indicazione dei Codici di Posa Nazionali. La larghezza delle fughe deve comunque essere decisa dalla Direzione Lavori  
the width of grout joints must be established by the installation supervisor, unless grout widths are regulated by national laying standards

(\*\*\*) Ad eccezione delle zone caratterizzate da un maggior rischio di scivolamento (come docce pubbliche, piscine coperte, ecc.) per le quali si consiglia una superficie Grip / With the exception of areas characterized by a higher risk of slipping (such as public showers, indoor swimming pools, etc.) for which a Grip surface is recommended

## Imballi / Packing

Articolo	Scatola			Pallet				
	cm	inch	pz.	mq	kg	scat.	mq	kg
Ⓢ Fondo	120x260	48"x102"	1	3,12	44,0	18	56,2	792,0
Fondo	120x120	48"x48"	2	2,88	40,6	24	69,1	974,4
Decoro Graf	120x260	48"x102"	1	3,12	44,0	18	56,2	792,0

Articolo	Scatola			Pallet				
	cm	inch	pz.	mq	kg	scat.	mq	kg
Ⓢ Fondo	120x120	48"x48"	2	2,88	62,0	20	57,6	1.240
Fondo	60x120	24"x48"	2	1,44	31,8	36	51,8	1.144,8
Fondo	60x60	24"x24"	4	1,44	29,7	32	46,1	950,4
Fondo	30x60	12"x24"	8	1,44	31,8	32	46,1	1.017,6
Fondo	90x90	36"x36"	2	1,62	33,6	25	40,5	840,0
Gamma 72	49,8x16,9	19 1/2"x6 5/8"	14	1,01	21,9	32	32,3	699,2
Muretto	30x60	12"x24"	4	0,72	15,6	30	21,6	468,0
Mosaico Mix	30x30	12"x12"	5	0,45	9,5	60	27,0	570,0
Mosaico 144	30x30	12"x12"	5	0,45	9,5	60	27,0	570,0
Battiscopa	5,5x60	2 11/64"x24"	12	7,2 m.l.	8,5	50	360 m.l.	426,0
Gradino plus	35x120	13 3/4"x48"	1	0,42	11,0	64	26,9	705,3
Angolo gradino plus	35x120	13 3/4"x48"	1	0,42	11,8	16	6,72	188,5
Gradino plus	35x60	13 3/4"x24"	2	0,42	10,1	32	13,4	322,2
Angolo gradino plus	35x35	13 3/4"x13 3/4"	2	0,25	6,4	36	8,82	229,1
Ⓢ Fondo (20mm)	60x60	24"x24"	2	0,72	32,5	32	23,04	1.040,0
Fondo (20mm)	60x120	24"x48"	1	0,72	32,5	36	25,92	1.170,0

## Certificazioni / Certifications

### Certificazioni aziendali / Company certifications



### Certificazioni e dichiarazioni di prodotto per edifici / Product certifications and declarations for buildings



**EPD:** I prodotti Lea Ceramiche possiedono Dichiarazione Ambientale di Prodotto (EPD) specifica di tipo III, certificata da ente terzo indipendente secondo le normative ISO 14025 e EN 15804. / Lea Ceramiche products have a type III specific Environmental Product Declaration (EPD). This is certified by an independent third party according to ISO 14025 and EN 15804 standards.

**CFP:** Per tutti gli articoli della gamma Lea Ceramiche è disponibile il calcolo dell'impronta di carbonio lungo l'intero ciclo di vita (CFP), espressa come CO<sub>2</sub> equivalente per unità di prodotto, certificata secondo la norma ISO 14067. / For all the items in the Lea Ceramiche collection, the calculation of the carbon footprint (PCF) over the entire life cycle is available, expressed as CO<sub>2</sub> equivalent per unit of product, certified according to ISO 14067.

**UPEC:** Pour plus d'informations, consultez <https://evaluation.cstb.fr>

**CE:** Le DOP sono disponibili sul sito internet [panaria.it](http://panaria.it). / DOP are available on the website [leaceramiche.com](http://leaceramiche.com)

**LEED - GBC ITALIA + GBC US MEMBER:** Lea Ceramiche è membro del U.S. Green Building Council e del Green Building Council Italia, organizzazioni che promuovono la realizzazione di edifici ed opere nel rispetto dell'ambiente, della salute e del benessere delle persone che ci vivono e lavorano. Le schede LEED sono disponibili su richiesta. / Lea Ceramiche is a member of the U.S. Green Building Council and of the Green Building Council Italia. These organizations promote the construction of buildings and other works which respect the environment as well as the health and well-being of the people who live and work within them. The LEED data sheets are available on request.

**FDES:** Fiche de Déclaration Environnementale et Sanitaire è una certificazione volontaria francese che fornisce le prestazioni ambientali e le informazioni di carattere sanitario di un prodotto da costruzione, in conformità alle norme ISO14025 e NF EN 15804+A2. Fiche de Déclaration Environnementale et Sanitaire is a voluntary French certification that provides the environmental performance and health-related information of a construction product, in accordance with ISO 14025 and NF EN 15804+A2 standards.

Per maggiori dettagli e per scaricare i certificati vi invitiamo a consultare il nostro sito: [leaceramiche.com](http://leaceramiche.com)  
For further details and to download the certificates please visit our website: [leaceramiche.com](http://leaceramiche.com)

## Destinazioni d'uso / Intended use

LEGENDA - KEY



### RESIDENZIALE RESIDENTIAL

A titolo indicativo e non esaustivo, cucine, bagni, living e ogni altro ambiente di uso residenziale.

For guidance purposes only and not exhaustive, kitchens, bathrooms, living rooms, and all other residential environments.



### ESTERNI OUTDOOR

Prevalentemente per ambienti esterni nei quali è richiesta una pavimentazione con prestazioni antiscivolo.

Mainly for external areas that require flooring with anti slip characteristics.



### COMMERCIALE LEGGERO LIGHT COMMERCIAL

A titolo indicativo e non esaustivo, uffici, uffici aperti al pubblico, sale d'attesa, negozi, bagni pubblici, aree comuni condominiali, sale di ristoranti, autosaloni, bar, cinema, ambulatori/cliniche, camere e bagni di hotel. In aree caratterizzate da passaggi obbligati, o dove è previsto l'utilizzo di sedie con ruote in plastica dura, non è consigliato l'utilizzo di prodotti con finitura LUX.

For guidance purposes only and not exhaustive, offices, offices open to the general public, waiting rooms, shops, public bathrooms, common apartment block areas, restaurant dining rooms, car showrooms, bars, cinemas, surgeries/clinics, hotel rooms and bathrooms. In areas subjected to forced traffic, or areas where chairs with hard plastic wheels are used, it is not advisable to use products with the LUX finishes.



### COMMERCIALE INTENSIVO INTENSIVE COMMERCIAL

A titolo indicativo e non esaustivo, aree comuni di centri commerciali, hall di hotel, mense, fast food, discoteche, ospedali, scuole, musei, luoghi di culto, aeroporti, stazioni.

For guidance purposes only and not exhaustive, common areas of shopping centres, hotel foyers, canteens, fast food restaurants, dance clubs, hospitals, schools, museums, places of worship, airports, stations.

**NOTE:** Le indicazioni suddette sono di carattere indicativo. Per ogni installazione occorrerà valutare le reali condizioni di utilizzo e sollecitazione del prodotto. La presenza sporadica di piccole disuniformità o di puntini sulla superficie e da ritenersi come caratteristica del materiale e della particolare lavorazione. Qualora il prodotto sia posto a diretto contatto con l'esterno, si consiglia di utilizzare soluzioni protettive al fine di prevenire la formazione di graffi. E responsabilità del posatore provvedere sempre alla protezione della piastrellatura finita e pulita, prima della consegna al committente, tramite appositi materiali protettivi (es. pannelli in truciolare, fogli di cartone, ecc.). In aree caratterizzate dal passaggio di carichi pesanti concentrati non è consigliato l'utilizzo di prodotti a spessore ridotto.

**NOTE:** The above indications are for guidance purposes only. For each installation, the actual conditions of use and stress affecting the product must be assessed. The occasional presence of small inconsistencies or little spots on the surface is to be considered a characteristic of the material and of its unique production process. If the product is laid in direct contact with external environments, it is recommended to use protective solutions to reduce scratches. It is the installer's responsibility to protect the finished and clean tiling before the delivery to the client, by using appropriate protective materials (e.g. chipboard, cardboard sheets, etc.). In areas that are subjected to heavy concentrated loads it is not recommended to use low thickness products.

## Colophon / Company info

LEA CERAMICHE  
Via Cameazzo, 21  
41042 Fiorano Modenese  
Modena Italy

T +39 0536 837811  
E info@leaceramiche.it  
leaceramiche.com

Panariagroup  
Industrie Ceramiche S.p.A.

Concept and art direction:  
Group Marketing &  
Communications —  
Panariagroup

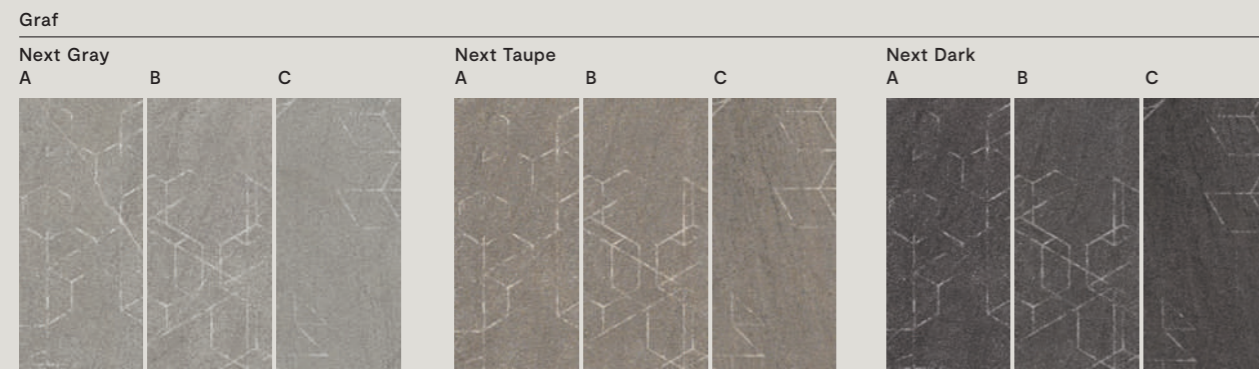
# Slimtech Nextone overview



## Colori / Colors

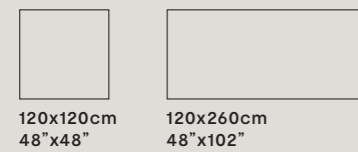


## Decori / Decors

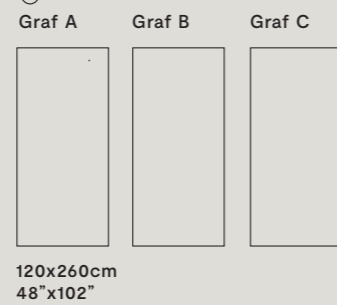


## Formati / Sizes <sup>LT<sup>1</sup></sup>

### Fondi/Plain Tiles



### Decori/Decors



**PROTECT**  
SUPERFICIE ANTIBATTERICA  
ANTIMICROBIAL SURFACE  
with MICROBAN®

Gres porcellanato laminato  
Laminated porcelain stoneware  
Spessore/thickness: 6mm

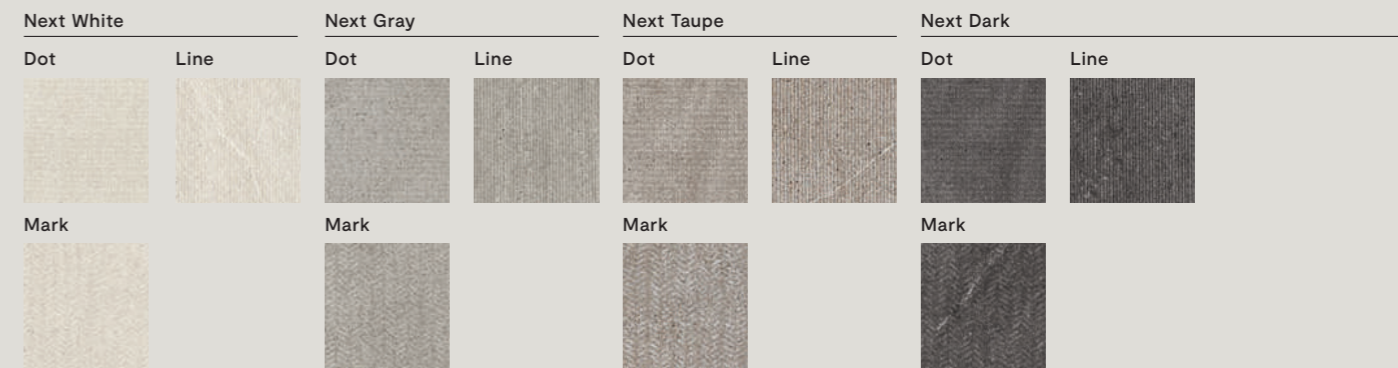
# Nextone overview



## Colori / Colors



## Varianti / Variations



## Formati / Sizes <sup>LT<sup>1</sup></sup>

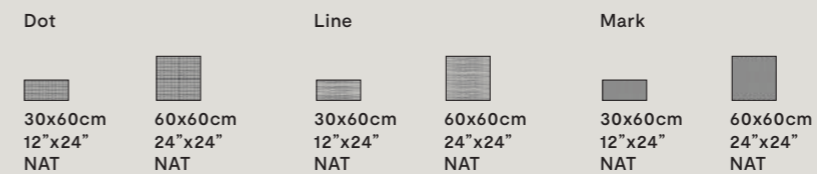
### Fondi/Plain Tiles



### Formati speciali/ Special sizes



### Varianti/Variations



### Mosaici/Mosaics



Gres porcellanato  
Porcelain stoneware  
Spessore/thickness: 9mm

Gres porcellanato spessorato  
Extra thick porcelain stoneware  
Spessore/thickness: 20mm

**PROTECT**  
SUPERFICIE ANTIBATTERICA  
ANTIMICROBIAL SURFACE  
with MICROBAN®

Gres porcellanato laminato  
Laminated porcelain stoneware  
Spessore/thickness: 6mm

[leaceramiche.com](http://leaceramiche.com)



3-TECH PROJECT